

Stepney Parish

Somerset County, Maryland *Md.*

Register and Vestry Proceedings

1703-1890

Births, Marriages and Deaths
Indexed from page 1 to ~~215~~ separate index

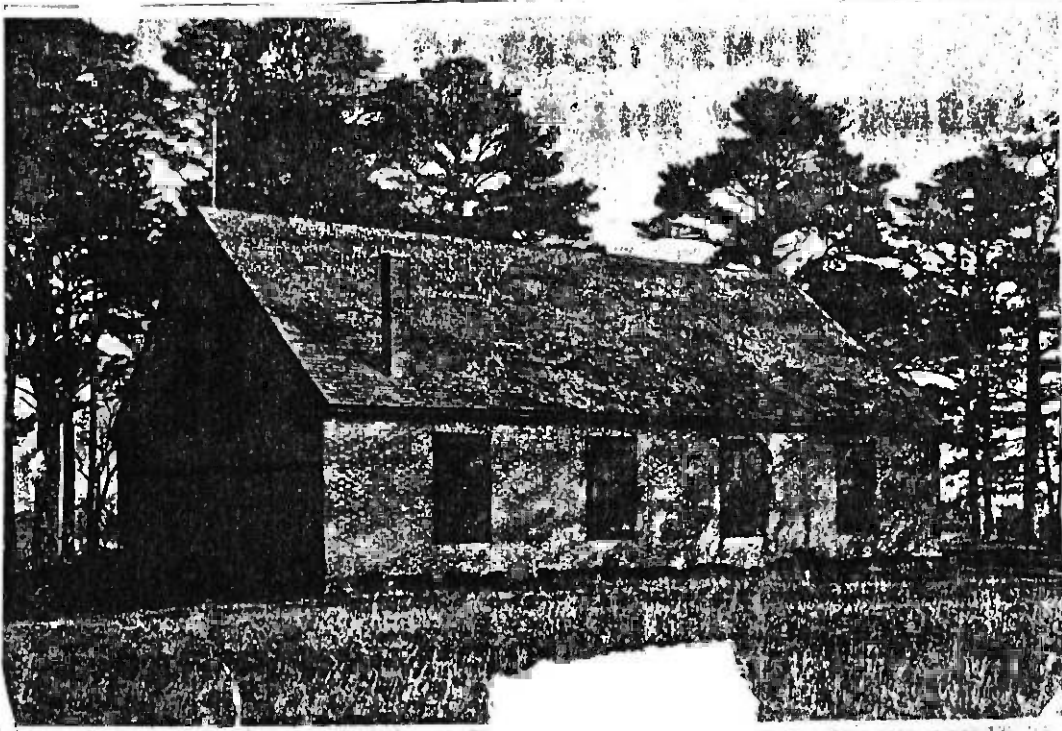
Vol.

The remainder of the book contains Vestry proceedings -
See Index page 396

1703-1890

Stepney Parish
Somerset County
"Green Hill" Md.

Copied in 1890.



GREEN HILL
CHURCH

It Stands Near Salisbury, On The Wicomico River, And Was Erected In 1733

From The Sun
March 1, 1931

Births, Marriages and Deaths
Indexed from page 1 to 246 - separate index

Vol. 4

The remainder of the book contains Vestry proceedings -
A - to say page 396

1802-1899

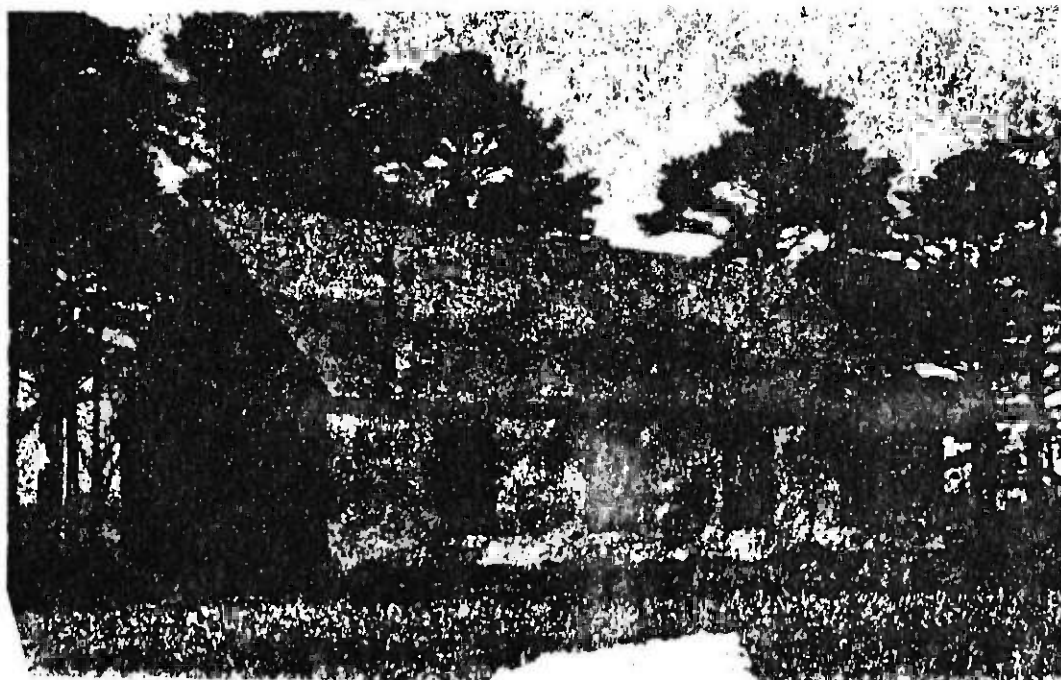
Stepney Parish

Wm. & A. County

Green Hill

Md.

Copied in 1890



GREEN HILL
CHURCH

It Stands Near Salis-
bury, On The Wicom-
ico River, And Was
Erected In 1733

From The Sun
March 1, 1931